

SPEPS Newsletter

Hi All,

Another fabulous week at Sharley park draws to a close. This week we have had a large number of visitors in schools for a variety of reasons. What warmed my heart was the feedback that was shared with me, about the family feel of the school, the warmth that came through and the confident, engaged and happy children that were seen. This made me and the staff smile. It is so lovely to hear from other professionals, positive feedback about the school.

I have to say today's assembly was another reason to smile. During the celebration section of the assembly, we had the most articulate and enthusiastic year 1 child, who shared her love for all things about space. She shared with the school about the Artemis 2 and her knowledge of the moon and space travel. The school sat in silence and the engagement in everything she said, was fantastic. I was not alone in leaving the assembly really excited about space and wanting to know more. I have a feeling the non-fiction space books, in our vast library, will all be checked out really quickly. Thank you Ellie

We have seen an increase in lateness recently. Please be reminded that school learning starts at 8.45am and not 9.00am.

We have a few new faces in school at the moment, as we have some students and some new volunteers in school. This is lovely for the children, as the extra support in learning and in the classroom helps the progress of our children.

Great news—we are currently trying to set a start date for the solar panels to be installed. This is fantastic news for school but we are aware that for a few weeks we will have quite a bit of large equipment on the car-park, so staff parking and some access areas will be reduced. However this is only for a short time and the benefits outweigh the positive long term outcomes.

We have noticed an increase in the children and parents who are crossing through the carpark and out through the main vehicle access front gates. This is an accident waiting to happen. Please do not do this and please share this information with your children. The vehicle access gate is strictly for car access only. Please stay safe and use the gates either side, which are a few steps away. From Monday Charles, our gate attendant, will be reminding you that you are not allowed to walk through these gates. Many thanks

Have a great weekend Mrs S xx



Teddy and Bear News!

This week I spent time in Year 4 and Year 5 and the little people were so lovely. I have noticed that there is a lot less on the floors, in school, for me to pick up. Mummy says this is fantastic whereas I am sad that I can't find any treasures, especially any nice bits to eat anymore. I will keep looking! Whilst Bear is a puppy, as older brother I will share his news with you from my point of view. This week Bear has learnt to sit on command and when Mummy says 'here' he goes to her for a treat. Other things he is good at is stealing my toys and also trying to chew the plants in mummy's office. Strangely, she didn't give him treats for that behaviour

Love Teddy and Bear xx

Believe, Courage, Achieve

SPEPS Newsletter

Golden Book & Learning Behaviours

Year 2— Maisie & Blythe
LB— Jayden & Jack

Year 6— Keenan & Freddie-Lynton
LB— Lily & Shania
Nurture—

Year 5 - Abigail & Henry
LB - Eli & Kai

Year 1— Myla-Grace & Nicholas
LB— Rachel & Bobby



Year 4— Isla & Alfie
LB - Freya & Anjelina

EYFS - Archie & Ruby
LB - Arlo & Dexter

Year 3 - Isla & Hayley
LB - Ellie & Tommy

Reminders and Dates for the diary ...

26th Jan— INSET day

27th Jan— Whitehall parents meeting 6pm

29th Jan— Dolphin class on a sports event

29th Jan— ND course for parents at St Barnabas 9-11

29th Jan- EYFS Maths Parent workshop

29th Jan— Lea Green parents meeting

w/c 2nd Feb— Parents evening for the school— please see your class dojo.

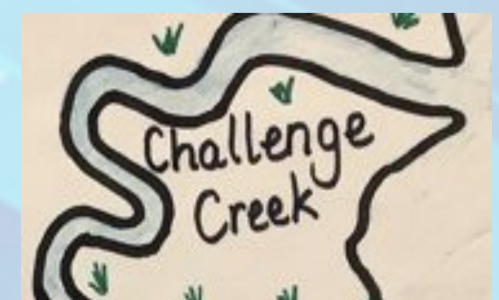
5th Feb- 5 Year Old's Dental Screening



The Journey Curriculum

Each week in school we will focus on an area of our Journey Curriculum Map—staff will ensure this is a focus in lessons and children will be asked about their understanding of it across the week. Our focus next week is...

Challenge Creek ..



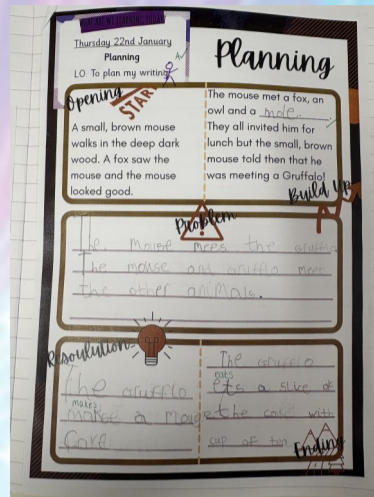
SPECPS Newsletter

Our fabulous work

EYFS



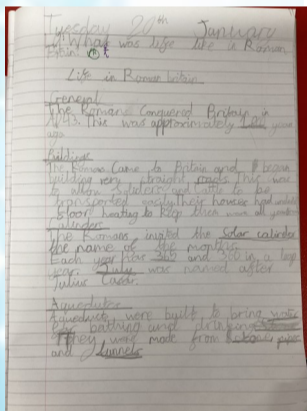
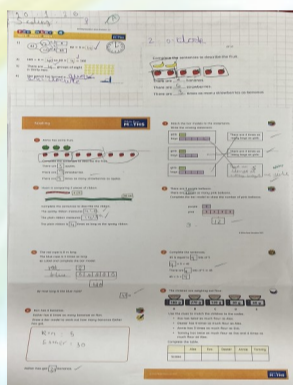
Year 1



Year 2



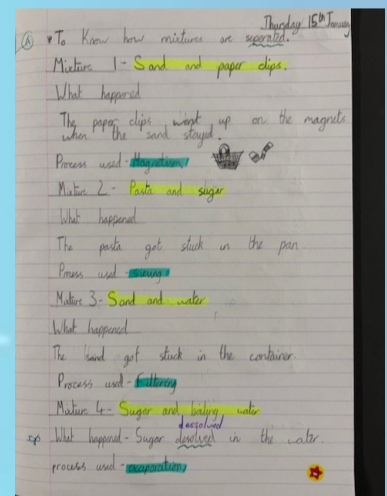
Year 3



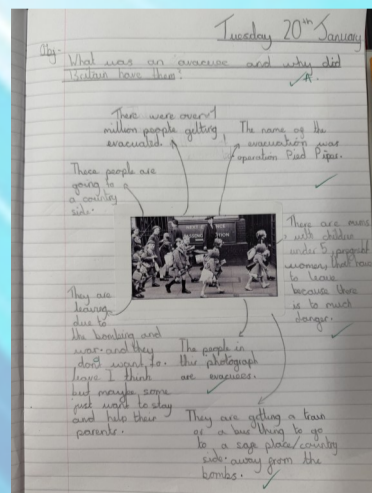
Year 4



Year 5



Year 6



Lots of Love

Mrs Stevenson

Head Teacher xx

Any Questions?



Let's journey together across our map, learning and progressing along the way.

Let's believe, have courage and achieve!



Mrs French

Deputy Head Teacher